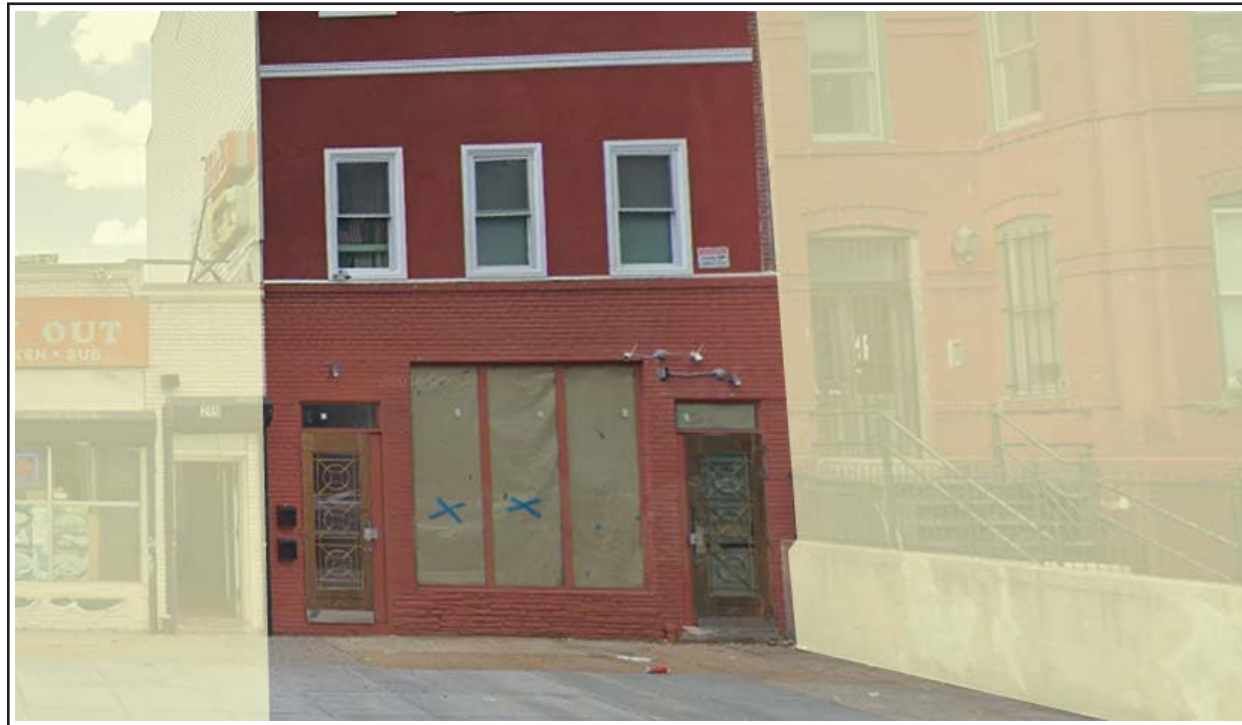


FOR LEASE

RETAIL SPACE IN NoMA

207 NEW YORK AVE, NW WASHINGTON DC 20001



OFFERING MEMORANDUM



1010 VERMONT AVE., NW
SUITE 716.
WASHINGTON DC 20005
www.vantagecr.com

Ken Noroozi
ken@vantagecr.com

O: (202) 347-3760
C: (301) 728-6037



1010 VERMONT AVE., NW
SUITE 716.
WASHINGTON DC 20005
www.vantagecr.com

Ken Noroozi
Ken@vantagecr.com

O: (202) 347-3760
C: (301) 728-6037

207 NEW YORK AVE, NW WASHINGTON DC 20001

AVAILABLE FOR IMMEDIATE OCCUPATION

Base Rent: \$4,500.00/Mo/NNN

- IDEAL FOR MOST RETAIL USES INCLUDING RESTAURANT
- ONE BLOCK TO N. CAPITOL ST
- SIZE: 720 SF
- WALK SCORE: VERY WALKABLE (95)
- DAYTIME EMPLOYEES: 136,479 (1Mile)
- MEDIAN HH INCOME: \$103,278



PROPERTY INFORMATION